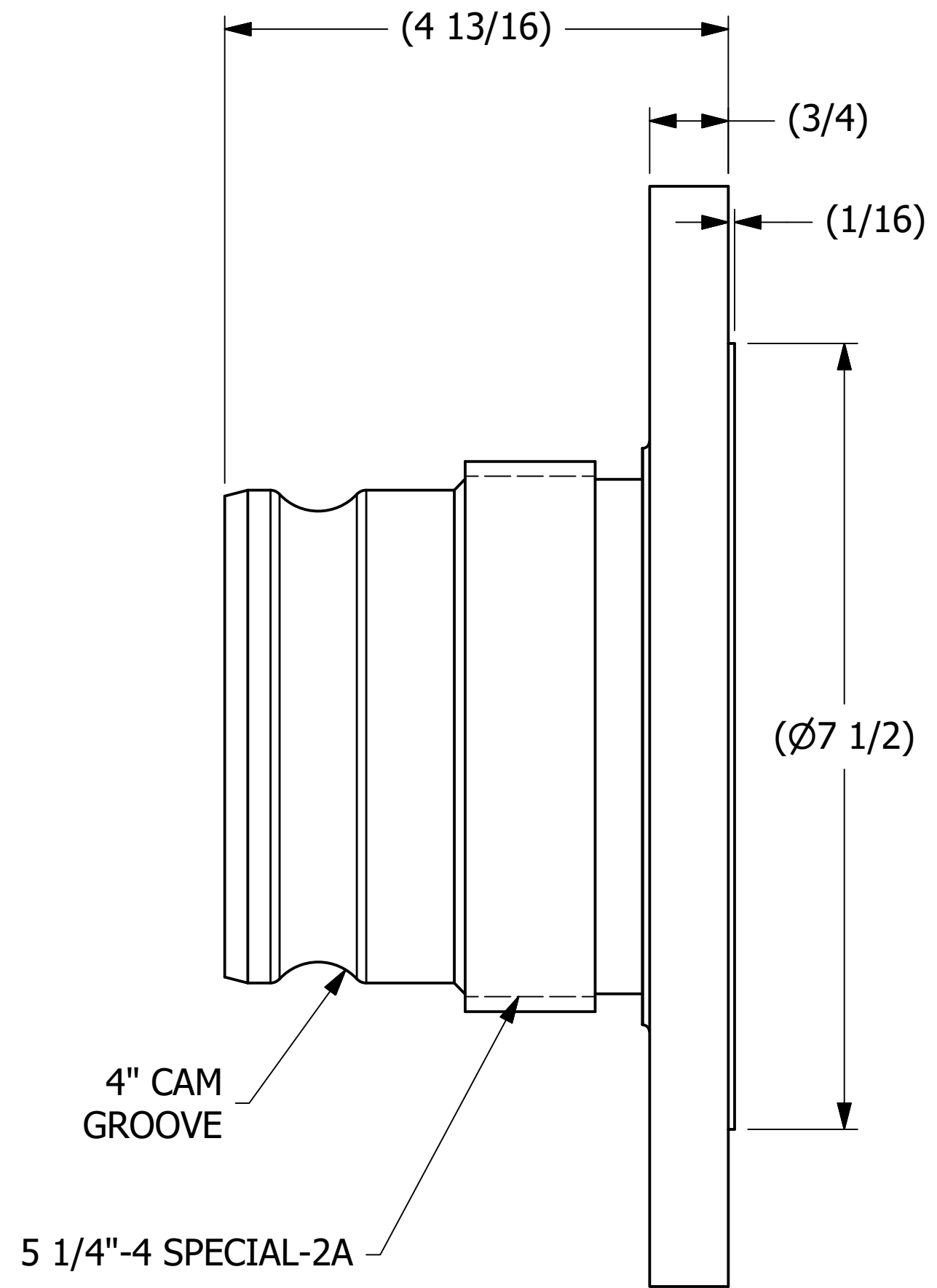
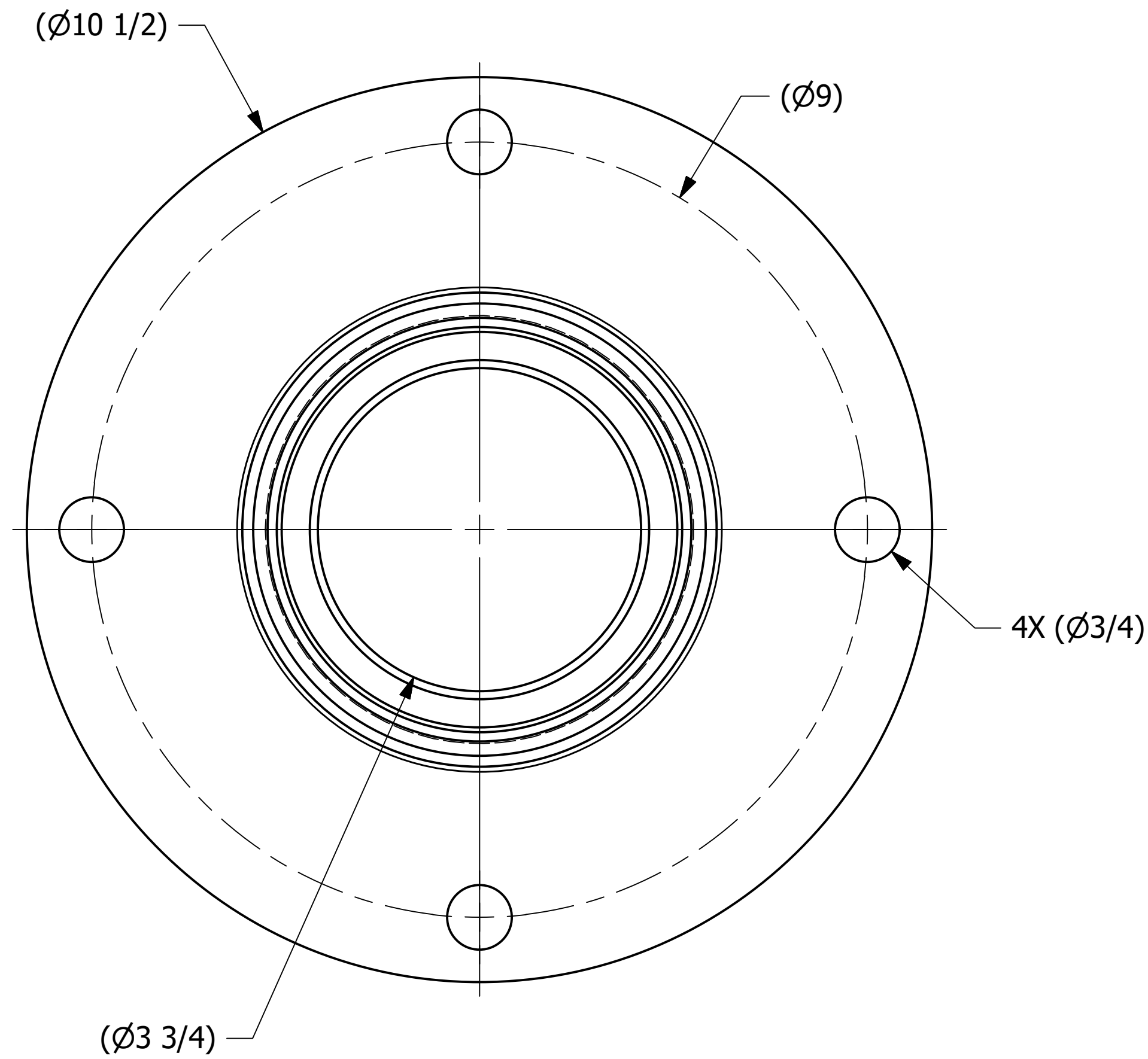


SALES DRAWING SALES DRAWING

SALES DRAWING SALES DRAWING



REV	BY	DATE	DESCRIPTION
H	CHL	4-24-19	ADDED RAISED FACE & SERRATED SURFACE NOTE
G	CHL	8-13-18	Q-2.14 WAS QAP5A-1; Q-2.15.7 WAS QAP4C-1 ADDED DIMENSION 4.051, UPDATED WELD NOTES & SYMBOL
F	RJP	5-11-17	UPDATED WELD NOTE TO DSS 12
E	WEB	1-23-15	ADDED SHEET 2 FOR FABRICATION
D	REH	10-17-11	UPDATED HEAT/LOT NOTE
C	REH	4-16-10	ADDED HEAT/LOT NUMBER NOTE
B	BRG	3-25-09	ADDED BOM & DIMENSIONS
A	ACC	3-8-01	ADDED PART INTO THE SYSTEM

UNLESS OTHERWISE SPECIFIED DIMENSIONAL TOLERANCES FRACTIONAL: $\pm 1/16$ X.XX: $\pm .03$ X.XXX: $\pm .015$ ANGLE: $\pm 1^\circ$ DEBURR ALL SHARP EDGES. ALL MACHINED SURFACES TO HAVE A 125 RMS FINISH UNLESS NOTED OTHERWISE. THIRD ANGLE PROJECTION	DRAWN BY:	CHL
	CHECKED BY:	ACC
	PROTOTYPE BY:	CHL
	PROTOTYPE DATE:	3/8/2001
	APPROVED FOR PRODUCTION BY:	ACC
	PRODUCTION DATE:	3/8/2001

SALCO PRODUCTS, INC.		
PART NAME: QUICK CONNECT ADAPTER 4" FLANGED		
MATERIAL: 316 SS		
PROJECT #: 000827	SHEET #: 1 OF 1	SCALE: 3:4
DRAWING #: C14909	PART #: TE4SF	